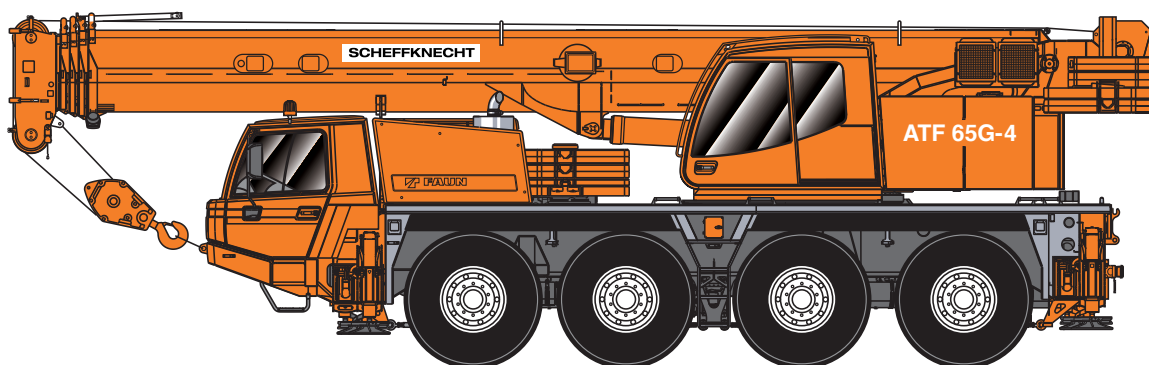


SCHEFFKNECHT

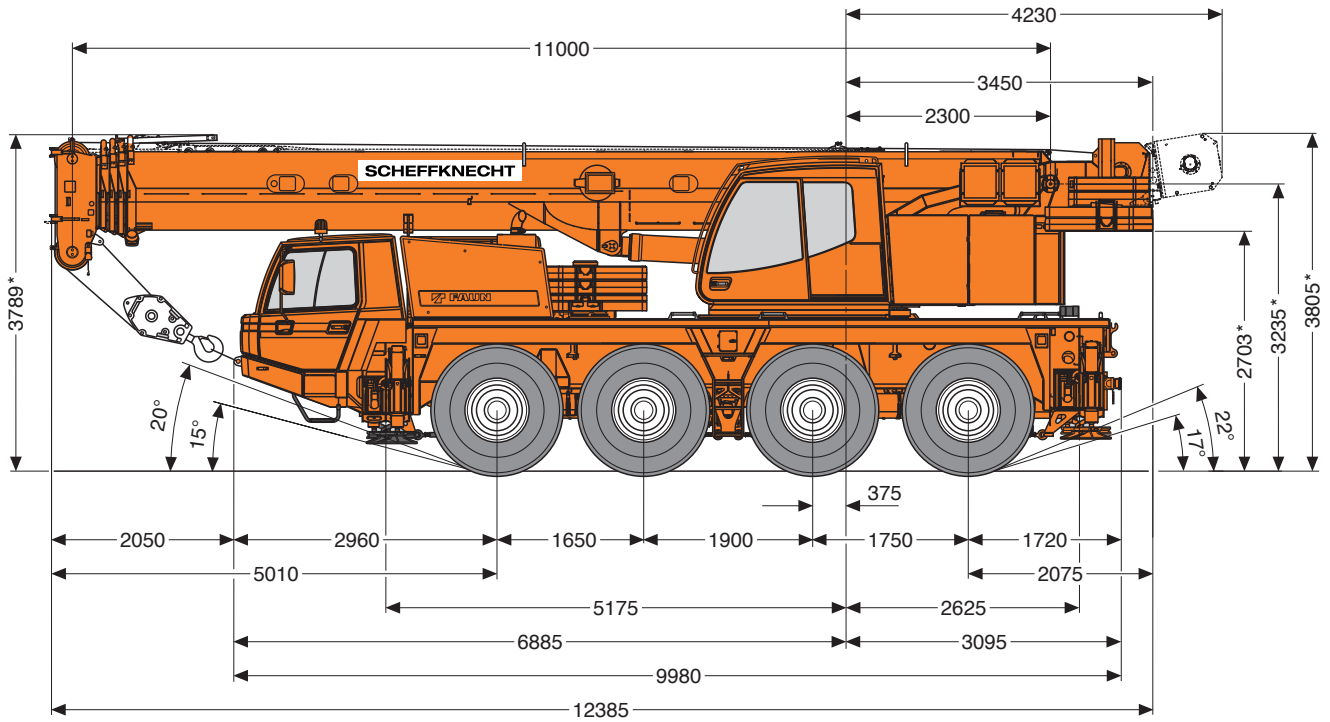


MOBILKRAN 70 TONNEN

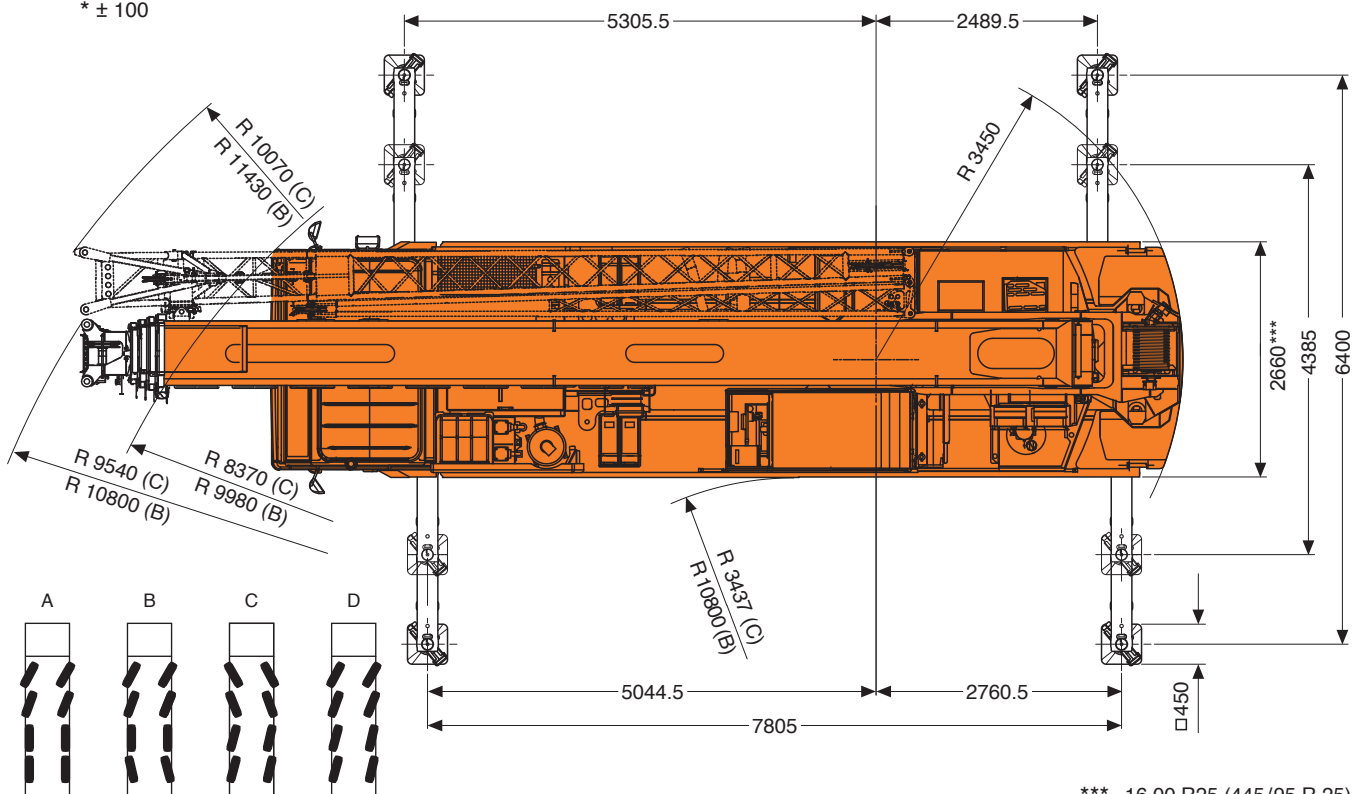
ATF 65G-4
TECHNISCHE DATEN

IHR KRANPARTNER IM DREILÄNDERECK. HOTLINE: +43 5577 / 826 04

16.00 R 25
(445/95 R 25)



* ± 100

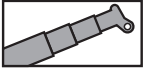


v > 25 km/h v < 25 km/h

*** 16.00 R25 (445/95 R 25)

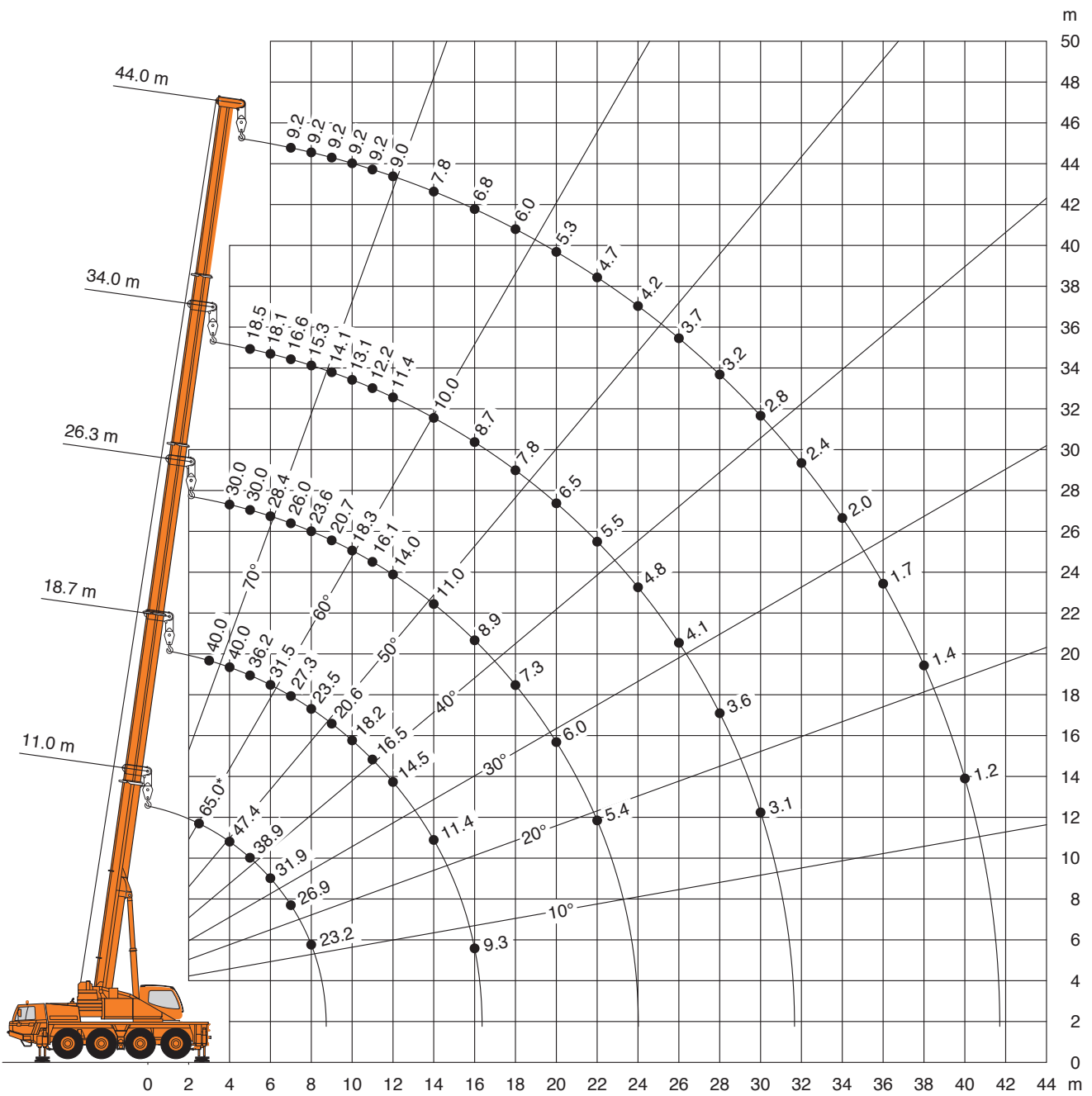
Hubhöhen

MOBILKCRAN 70 TONNEN



12.5t + 2.5t Option = 15t

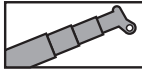
DIN/ISO/EN



* Nach hinten mit Zusatzhubausrüstung / * Over rear with additional lifting equipment / * A l'arrière avec équipement supplémentaire / * Sobre la parte trasera con equipo adicional



Tragfähigkeiten

MOBILKRAN 70 TONNEN



12.5t + 2.5t Option = 15t

DIN/ISO/EN

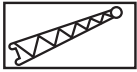
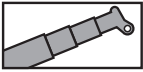
 m	11.0 m*	11.0 m	14.8 m	18.7 m	22.5 m	26.3 m	30.1 m	34.0 m	37.8 m	41.6 m	44.0 m	
2.5	65.0**											
3.0	55.8	54.8	50.0	40.0								
3.5	51.3	49.7	47.0	40.0	35.0							
4.0	47.4	45.4	43.4	40.0	34.9	30.0						
4.5	43.5	41.6	40.3	38.8	33.2	30.0	23.4					
5.0	38.9	37.8	37.6	36.2	32.0	30.0	22.2	18.5				
6.0	31.9	31.8	32.0	31.5	31.2	28.4	20.1	18.1	14.0			
7.0	26.9	26.9	27.2	27.3	27.0	26.0	18.3	16.6	14.0	10.4	9.2	
8.0	23.2	23.2	23.5	23.5	23.3	23.6	16.8	15.3	14.0	10.4	9.2	
9.0			20.5	20.6	20.6	20.7	15.4	14.1	13.1	10.4	9.2	
10.0			18.2	18.2	18.6	18.3	14.3	13.1	12.2	10.4	9.2	
11.0			16.2	16.5	16.5	16.1	13.2	12.2	11.4	10.4	9.2	
12.0			14.1	14.5	14.4	14.0	12.3	11.4	10.7	9.9	9.0	
14.0				11.4	11.3	11.0	10.7	10.0	9.4	8.9	7.8	
16.0				9.3	9.2	8.9	8.6	8.7	8.4	7.9	6.8	
18.0					7.6	7.3	7.2	7.8	7.3	7.1	6.0	
20.0					6.8	6.0	6.6	6.5	6.5	6.2	5.3	
22.0						5.4	5.8	5.5	5.5	5.2	4.7	
24.0							5.0	4.8	4.7	4.4	4.2	
26.0							4.3	4.1	4.0	3.8	3.7	
28.0								3.6	3.5	3.2	3.2	
30.0								3.1	3.0	2.8	2.8	
32.0									2.6	2.4	2.4	
34.0									2.3	2.0	2.0	
36.0										1.7	1.7	
38.0										1.4	1.4	
40.0											1.2	
 %	I	0	0	0/0/0	46/0/0/0/0	93/46/46/0/0	93/93/46/0	93/93/0	93/46/0	93/46	93	100
	II	0	0	46/0/0	46/93/46/0/0	46/93/46/46/0	93/46/46/0	93/46/46	93/46/93	93/93	93	100
	III	0	0	0/46/0	0/0/46/46/0	0/0/46/46/46	0/46/46/93	46/46/93	46/93/93	93/93	93	100
	IV	0	0	0/0/46	0/0/0/46/93	0/0/0/46/93	0/0/46/93	0/46/93	46/93/93	46/93	93	100

* Nach hinten / * Over rear / * A l'arrière / * Sobre la parte trasera

** Mit Zusatzhubausrüstung / ** With additional lifting equipment / ** Avec équipement supplémentaire / ** Con equipo adicional

Hubhöhen

MOBILKRAN 70 TONNEN



12.5t + 2.5t Option = 15t

DIN/ISO/EN

